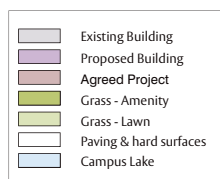


Whiteknights development plan




Arrangements for Consultation

There will be a six week public exhibition held in the Palmer Building foyer at Whiteknights Campus where draft plans can be viewed. It will be open to all from 8.30am until 9.30pm, Monday to Friday, from November 2–December 14, 2007.

In addition, the exhibition will be staffed by members of the Development Team who will be available to discuss the plans in detail from 4.00pm until 8.00pm on Friday 2 November and 10.00am until 4.00pm on Saturday 3 November.

Whiteknights development plan

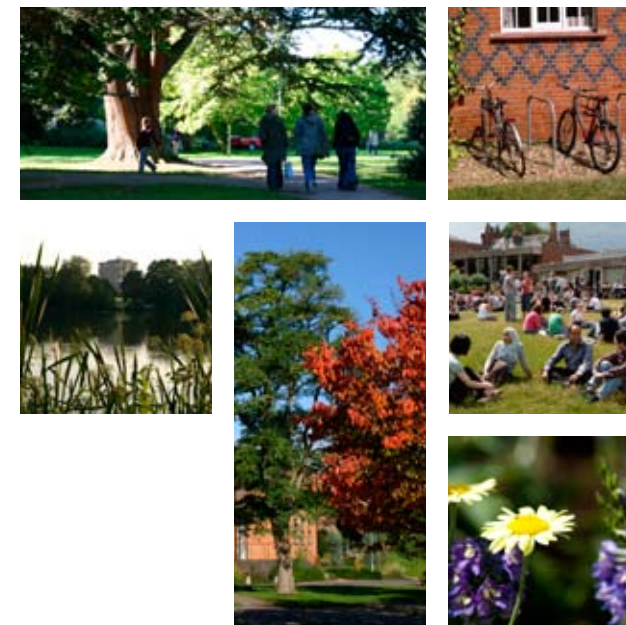
 For more information, please contact:

Communications Office

University of Reading
Whiteknights
Reading RG6 6AH
United Kingdom

queries@reading.ac.uk
Tel (0118) 378 4479

www.reading.ac.uk



Whiteknights Development Plan

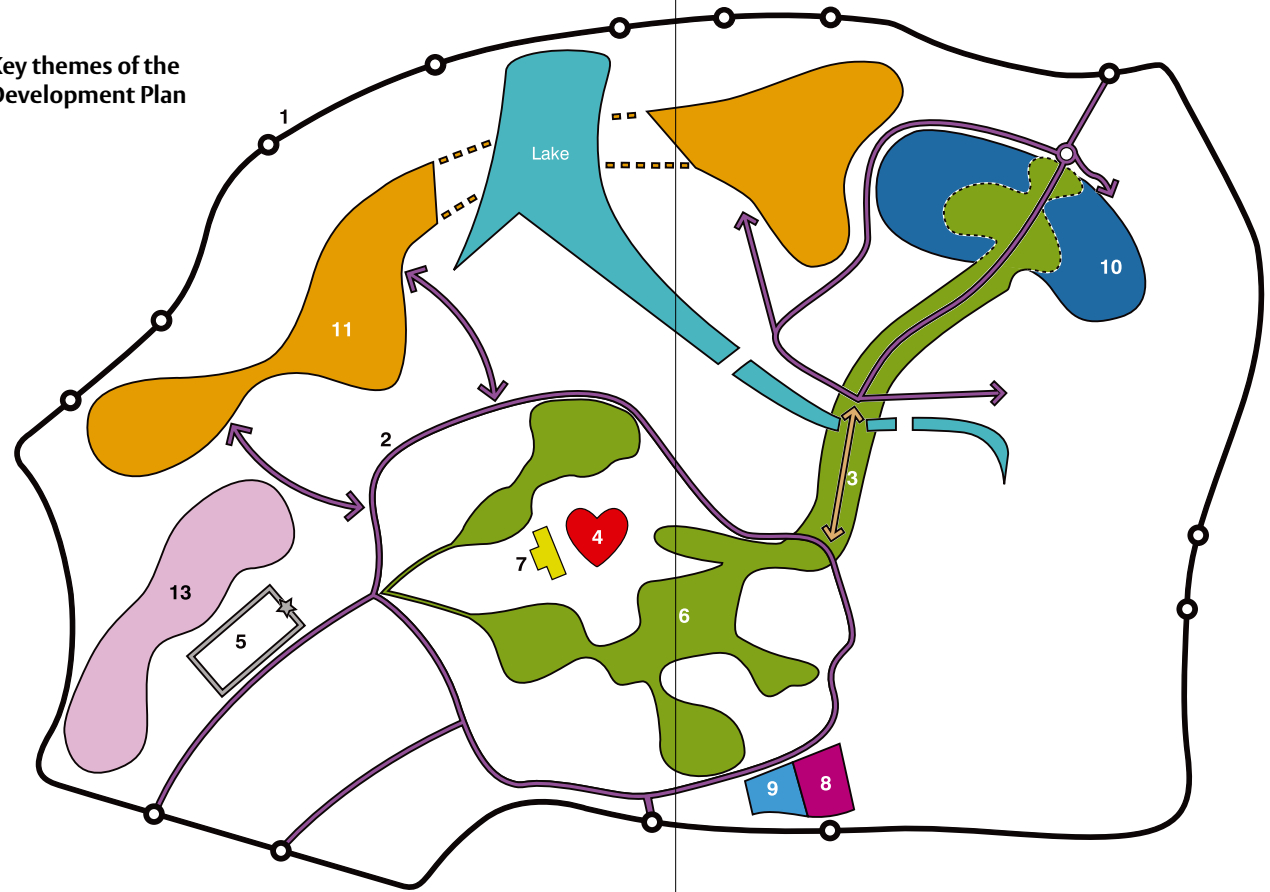
The University is seeking to consult as widely as possible with members of the public, staff, students, local organisations and businesses regarding the £250m Whiteknights Campus Development Plan covering the years 2008-2018.

A six-week open exhibition will be held on campus, giving all interested parties the opportunity to view, discuss and comment on proposals prior to plans being finalised and submitted to Wokingham and Reading Borough Councils early in 2008.

The development programme will include the replacement of a number of halls of residence, the improvement of sports and recreational facilities, changes to parking and public access to the campus, whilst retaining the high quality environment of the campus in a sustainable way.



Key themes of the Development Plan



A draft Whiteknights Development Plan has been prepared by the consultant team. There are a number of key proposals.

- 1 To reduce the number of peripheral vehicle entry/exit points.
- 2 To review the internal movement and parking strategy.
- 3 To improve the connection between the heart of the campus and the Earley Gate area.
- 4 To reinforce the centre of the Campus as the hub of student facilities.
- 5 To create a new entry management arrangement for visitors.
- 6 To improve the 'public' realm.

- 7 To provide for a new Film, Theatre and Television Building.
- 8 To improve the collection of waste and recyclables.
- 9 To provide a new central catering operation.
- 10 To create a stronger Academic, Research and Business Quarter at Earley Gate.
- 11 To replace a number of Halls of Residence
- 12 To protect environmental assets.
- 13 To enhance Sports and Recreation provision.

For more information, please contact Ann Westgarth:

queries@reading.ac.uk

0118 378 4479

Communications Office, Whiteknights House,
University of Reading, RG6 6AH