

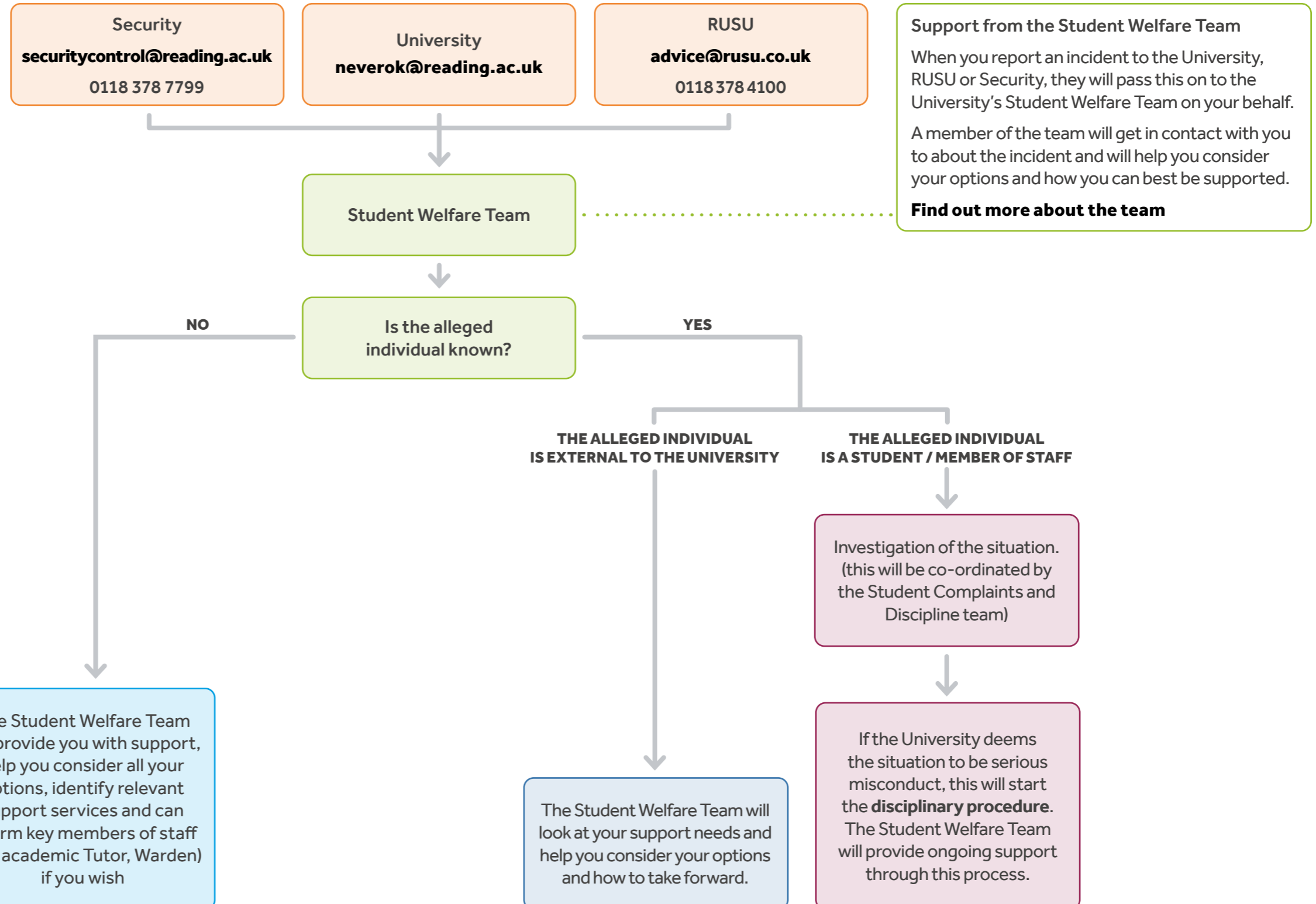
REPORTING AN INCIDENT

DIFFERENT WAYS TO REPORT AN INCIDENT

Types of incidents that should be reported

- Abuse
- Bullying and harassment
- Discrimination
- Hate-crime and incidents
- Racism
- Sexual Harassment and Assault

For more information visit
www.reading.ac.uk/NeverOk



Support from the Student Welfare Team

When you report an incident to the University, RUSU or Security, they will pass this on to the University's Student Welfare Team on your behalf. A member of the team will get in contact with you to about the incident and will help you consider your options and how you can best be supported.

Find out more about the team