

Invitation and preliminary programme



International Conference 2009

Improving healthcare
infrastructures
through innovation

HaCIRIC 2009



2-3 April 2009

Hilton Brighton Metropole hotel
Brighton, UK



Scientific committee



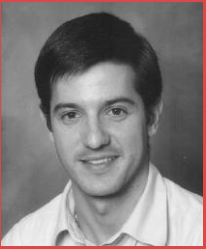
Jochen Abel
aurelis
Universität Karlsruhe
Germany



Prof. James Barlow
Imperial College
HaCIRIC
UK



Jane Carthey
Centre for Health
Assets Australasia
Australia



Ricardo Codinhoto
University of Salford
HaCIRIC
UK



Prof. Geert Dewulf
University of Twente
The Netherlands



Prof. Alan Dilani
International
Academy for Design
and Health
Italy



Jonathan Erskine
Durham University
UK



Prof. Colin Gray
University of Reading
HaCIRIC
UK



Prof. Mike Kagioglou
University of Salford
HaCIRIC
UK



Prof. Paul Lillrank
Helsinki University of
Technology
Finland



Prof. Andrew Price
Loughborough
University
HaCIRIC
UK



Prof. Stefan Scholtes
University of
Cambridge
UK

Welcome

On behalf of the Health and Care Infrastructure Research and Innovation Centre (HACIRIC), we would like to invite you to HaCIRIC's International Conference 2009 **Improving healthcare infrastructures through innovation**.

This conference aims to bring together researchers and practitioners from across disciplines and countries with different healthcare systems to focus on this issue. We are seeking original thinking on how to improve the planning and delivery of healthcare infrastructures through innovative approaches. We accepted papers which report on research within this general theme.

Areas of particular interest include:

- Integrating infrastructure and service planning.
- Stimulating innovation in infrastructure provision.
- Examples of infrastructure innovation targeted at key problems such as healthcare acquired infections.

We hope you can all enjoy participating and engaging in this debate.

We would like to thank the scientific committee members, all the speakers, chairmen and panellists who have agreed to share their knowledge and expertise to make this conference possible.

We look forward to your participation in HaCIRIC's International Conference 2009.

Professor Mike Kagioglou

Director
HaCIRIC, University of Salford

Professor James Barlow

Principal Investigator
HaCIRIC, Imperial College

Professor Andrew Price

Academic Director
HaCIRIC, Loughborough University

Professor Colin Gray

Academic Director
HaCIRIC, University of Reading

Who should attend?

All those involved in developing policy and in planning, delivering and operating infrastructure for healthcare. **Early bird discount is available until 28 February 2009.**

About HaCIRIC

HaCIRIC is a collaboration between existing research centres at Imperial College London and the Universities of Loughborough, Reading and Salford. Additional partners from other universities, industry and the care system are involved in specific research projects.

Our research aims to improve the way healthcare infrastructure is planned, designed and delivered, and the impact it has on the health and social care system.

The venue

Explore vibrant Brighton from the beachfront Hilton Brighton Metropole hotel, the south of England's largest residential conference facility.

Preferential rates are available if you book before 21 February.

Find more information this and other hotels at the end of this invitation.

Hilton Brighton Metropole hotel

Kings Road

East Sussex, Brighton

BN1 2FU

United Kingdom

Telephone: +44 (0)1273 775432

Email: reservations.brightonmet@hilton.com



The programme includes

→ Paper and poster presentations

With the latest findings in the field from UK and international healthcare academics and practitioners

→ PHD workshop on 1 April 2009

The workshop will enable students to discuss their research and obtain feedback in relation to their research methods and preliminary results.

This workshop is intended to be informal, supportive and interactive. A programme is available upon request. Places are limited.

→ European Panel on 2 April 2009

Healthcare improvement through innovation

Panellists include:

Prof. Martin McKee

UCL

Bernd Rechel

London School of Hygiene & Tropical Medicine

Stephen Wright and Barrie Dowdeswell

European Centre for Health Assets

Marinus Verweij

Netherlands Board for Hospital Facilities

→ Visit to healthcare facilities on 3 April 2009

Visits will be organised to the **Royal Alexandra Children's Hospital** and the **Hove Polyclinic**, one of the first facilities set up in the UK following the polyclinic model.

Royal Alexandra
Children's Hospital



Hove Polyclinic



Preliminary programme

Thursday 2 April 2009

9.00 9.30 Registration and coffee

9.30 9.45 Chairman's introduction

Session 1 - Chaired by Prof. James Barlow

9.45 10.15 **The development of a modelling tool for the optimal adoption of healthcare technology in the NHS**
Gareth Redmayne, NHS Technology Adoption Centre

10.15 10.45 **The challenges of implementing sustainable remote care services**
Dr Jane Hendy, Imperial College London

10.45 11.15 **The role of policy-project relations in technology deployment: a comparison of two case studies**
Maria Kapsali, University of Manchester

11.15 11.30 Coffee

Session 3 - Chaired by Prof. Colin Gray

11.30 12.00 **Hospital concessions: flexibility in practice**
Dr. ir. Anneloes Blanken, Ministry of Finance, The Netherlands

12.00 12.30 **How can capital investment in Europe be made more effective?**
Bernd Rechel, London School of Hygiene & Tropical Medicine

12.30 13.30 Poster presentations

13.30 14.30 Lunch

14.30 15.30 Keynote speaker TBC

15.30 16.00 Coffee

16.00 17.30 **European panel**
Healthcare improvement through innovation

18.30 19.30 Drinks reception

20.00 22.00 Gala dinner

Session 2 - Chaired by Prof. Mike Kagioglou

A new horizon for planning services and infrastructure for the elderly
Joram Nauta, Dutch Center for Health Assets

LIFTing the veil? Lessons from Infrastructure development in Ontario
Dr. Deborah Fitzsimmons, The York Management School

Design for operational efficiency: the case study of a hospital redevelopment
Dr Patricia Tzortzopoulos, University of Salford

Session 4 - Chaired by Prof. Andrew Price

Who really counts in strategic asset management: using stakeholder weighting to inform investment decision making
Grant Mills, Loughborough University

Realising the benefits of LIFT primary healthcare facilities & services
Stelios Sapountzis, University of Salford

Friday 3 April 2009

8.30 11.30 Sightseeing or networking

Visits to healthcare facilities are included in the conference fee and must be booked at the registration desk on 2 April 2009. Places are limited and will be available on a first come first served basis.

11.30 11.45 Coffee

Session 5 - Chaired by Prof. Andrew Price

11.45 12.15 **How do UK healthcare building designers use government guidance (health building notes)?**
Dr Sue Hignett, Loughborough University

12.15 12.45 **The role of parametric modelling and environmental simulation in stimulating innovation in healthcare building design and performance**
Dr Emeka Efe Osaji, Loughborough University

12.45 14.00 Lunch

Session 7 - Chaired by Prof. James Barlow

14.00 14.30 **System innovations in the making: hybrid actors and the challenge of up-scaling**
Dr Sirkku Kivisaari and Eveliina Saari, VTT Technical Research Centre of Finland

14.30 15.00 **Contrasting the stroke treatment and care pathways in three English-speaking countries**
Prof. Stan Finkelstein, MIT

15.00 15.15 Close

Session 6 - Chaired by Prof. Colin Gray

Single patient bedroom provision in acute settings: critical success factors for change
Robert Gregory, London South Bank University

Wayfinding: embedding knowledge in hospital environments
Clementinah N. Rooke, University of Salford

Fees

Fees (incl. VAT)	Full rate	Early bird	Students
2-3 April*	£300	£280	£260
2 April only**	£180	£170	£160
3 April only**	£120	£110	£100
PhD workshop**			£55
Dinner for accompanying person	£40		

Please tick the relevant box(es)

*Includes dinner but does not include overnight accommodation

**Includes lunch

(1) Early bird discount applies before 28 February 2009

The delegate registration fee includes:

- Attendance to the conference
- Delegate's pack
- Visit to healthcare facilities
- Coffee breaks
- Lunch on 2 and 3 April 2009
- Drinks reception and Gala dinner on 2 April 2009

Accommodation

You can make your booking on line at

www.hilton.com/imperial

or e-mail reservations.brightonmet@hilton.com

A special rate of £100 for a standard room is available until 21 February 2009 if you quote this conference as a reference.

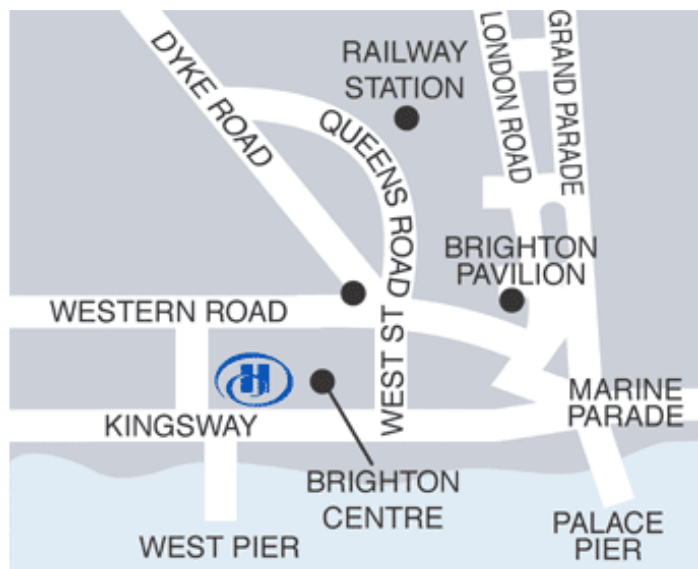
For alternative accommodation go to

<http://www.hibrighton.com/>

http://www.hotelscombined.com/Education_Support

http://www.hotelscombined.com/City/Brighton_England.htm

<http://www.visitbrighton.com/>



Ways to register

You can send this form via e-mail or post.

To register or for more information please contact

Ana Wheelock

HaCIRIC

Level 2

Imperial College Business School

Tanaka building

South Kensington Campus

London SW7 2AZ, UK

Tel: +44 (0)20 7594 3772

a.wheelock@imperial.ac.uk

Delegate details

Title (Mr, Ms, Mrs, Dr):

First Name:

Surname:

Job Title:

Department:

Organisation:

Address:

Town County:

Postcode Country:

Tel:

Fax:

Mobile:

Email:

How to pay

CREDIT / DEBIT Card

Card N°:

Expiry Date:

Issue No (for Switch):

Valid from:

Amount £

CHEQUE

Please find enclosed a cheque for the amount of £

made payable to **Imperial College London**.

Please send to the address in Ways to register

Do you require an invoice:

Signature

I have read the cancellation policy and agree with the terms and conditions. I authorise the use of my credit/debit card for the above payment.

Terms and conditions

Booking conditions

A confirmation email will be sent within 3-5 working days from receipt of your booking. Please note that an invoice will be sent to you only on request. If payment is not received, delegates will be asked to guarantee payment with a personal credit card on the day.

Cancellations / substitutions

Cancellations made before 2 March 2009 will be charged at 10% of the invoice total. Cancellations made between this date and 20 March 2009 will be charged at 50% of the invoice total. Cancellations made after this date will be charged the full invoice total. However you can send a substitute delegate at any time. Bookings received less than two weeks before the conference date can only be paid by credit card. Cancellations and substitutions must be made in writing.