

Interactive Dashboard

Arushi Tyagi

BSc. in Information Technology

ABSTRACT

This proposed project presents the development and use of an Interactive Dashboard for the Student recruitment team of University of Reading. The product is developed using software named Tableau that analyzes data and produces reports and graphs based on parameters. This enables the user find and analyzes trends that are generated through the data. In this case, it is the number of students in different programs that are recruited by the university over five years. This would help the recruitment department to monitor and measure the performance of the university in terms of recruiting students in different courses from different regions and countries. In addition, the dashboard would the team to drill into information and reset their goals as well as share the report with the schools within the university. Features of the software have extensively been used in order to make effective use of information provided by the university.

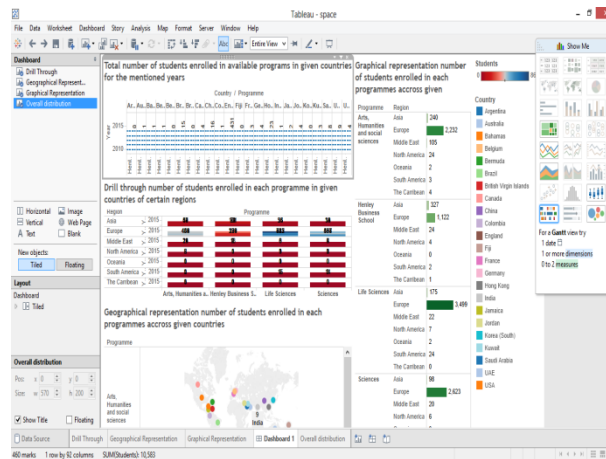


Figure 1. Interactive Dashboard

A Tyagi, Interactive Dashboard, *Proc. 13th School Conf. for Annual Research Projects*, V F Ruiz (Ed), pp. xx-yy, University of Reading, 31 April 2016.